

INTERLOCKING SAFETY SWITCHES

Features

- Galvanically separated contacts
- Screw terminals with self-lifting clamps for easy wiring
- Positive Opening of NC contacts
- 4 x 90° actuator positions
- Horizontal or Vertical Operation

Definitions of Operating Characteristics

- OF Operating Force
- RF Releasing Force
- OT Overtravel
- TT Total Travel
- PT Pretravel
- MD Movement Differential
- OP Operating Position
- PO Travel to Positive Opening



Specifications

Operating Speed	0.05mm-0.5m/sec
Operating Frequency	Mechanical: 120ops/min Electrical: 30 ops/min
Insulation Resistance	>100MΩ@500V DC
Contact Resistance	<25mΩ (initial value)
Rated Current/Voltage	10A/600V AC (EN60947-5-1) AC15 A600 / DC13 Q300
Dielectric Strength	1000VAC for 1 min between current carrying parts 2500VAC for 1 min between non-current carrying parts
Service Life	Mechanically 1.0 x 10 ⁷ (operations) Electrically 5 x 10 ⁵ (operations)
Operating Temperature	-25~+80°C (-13~176°F)
Humidity	< 95%RH
Degree of Protection	IP65/ IP67

Plastic-Bodied Interlock Safety Switch

Selection Guide

SND2191

- Body Type
 - SND2191 Mini Plastic Body, 3 Conduit
 - SND4191 Plastic Body, 1 Conduit
 - SMN4191 Plastic Body, 1 Conduit
 - SN6191 Metal Body, 1 Conduit
 - SND6191 Large Metal Body, 1 Conduit

SL

- SL: 1NO/1NC Slow Action Changeover
- SL2: 2NC Slow Action
- SL7: 2NC/1NO Slow Action Overlapping

C

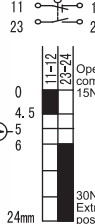
- Conduit
 - A: 1/2"NPT
 - B: PG13.5
 - C: M20
 - D: M16
 - B1: PG11

SND2191



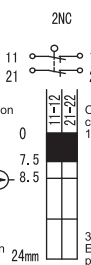
SND2191-SL

Slow Action (Changeover)
1NO/1NC



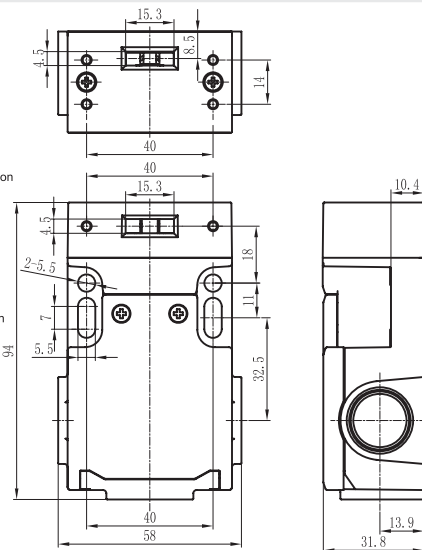
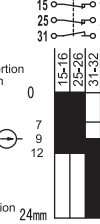
SND2191-SL2

Slow Action
2NC



SND2191-SL7

Slow Action (Overlapping)
2NC/1NO



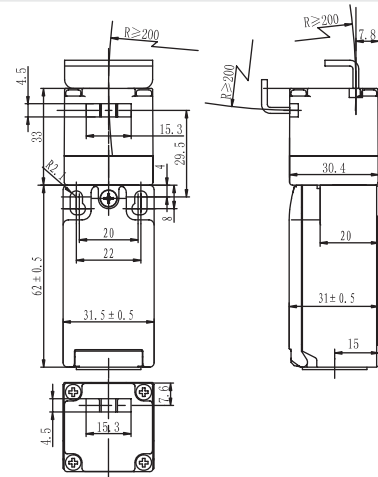
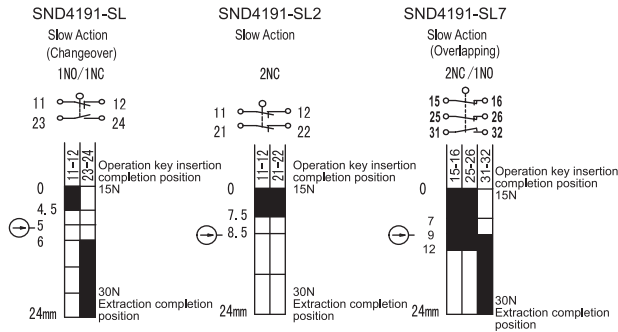
Order Code

Contact block

SND2191-SL- _	SL		slow action	1NO+1NC	BBM
SND2191-SL2- _	SL2		slow action	2NC	
SND2191-SL7- _	SL7		slow action	2NC/1NO	MBB

INTERLOCKING SAFETY SWITCHES

SND4191

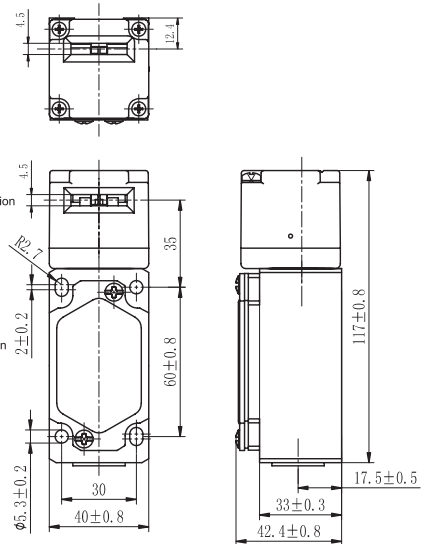
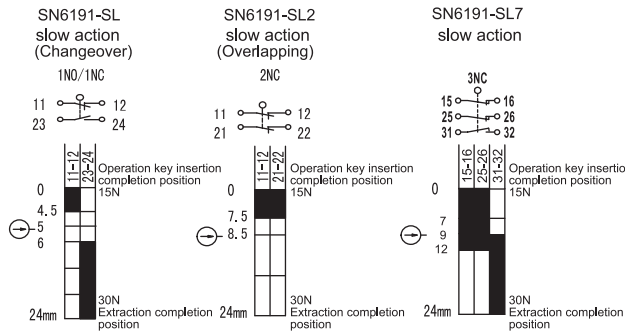


Order Code

Contact block

SND4191-SL- _	SL	⊕	slow action	1NO+1NC	BBM
SND4191-SL2- _	SL2	⊕	slow action	2NC	
SND4191-SL7- _	SL7	⊕	slow action	2NC/1NO	MBB

SN6191

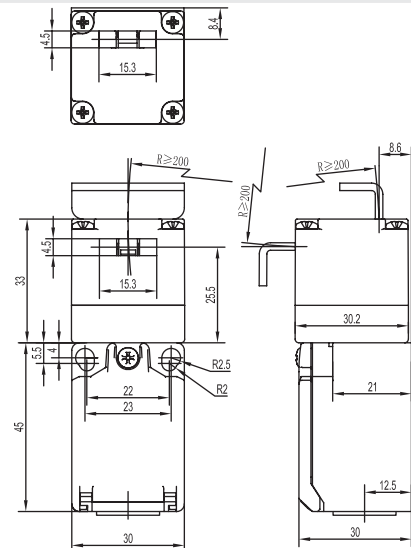
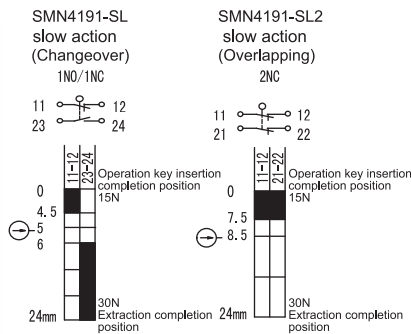


Order Code

Contact block

SN6191-SL- _	SL	⊕	slow action	1NO+1NC	BBM
SN6191-SL2- _	SL2	⊕	slow action	2NC	
SN6191-SL7- _	SL7	⊕	slow action	2NC/1NO	

SMN4191



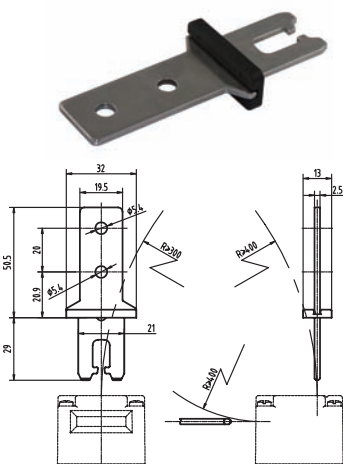
Order Code

Contact block

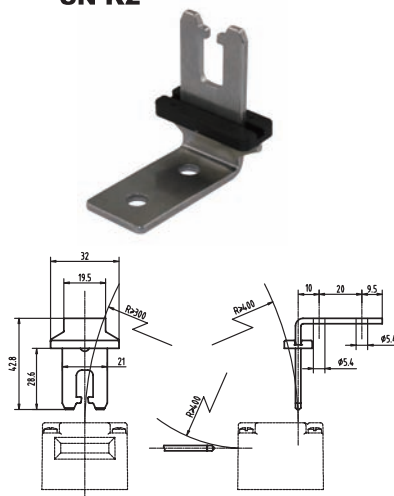
SMN4191-SL- _	SL	⊕	slow action	1NO+1NC	BBM
SMN4191-SL2- _	SL2	⊕	slow action	2NC	

INTERLOCKING SAFETY SWITCHES KEY

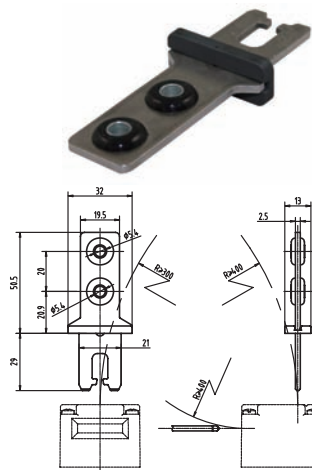
SN-K1



SN-K2

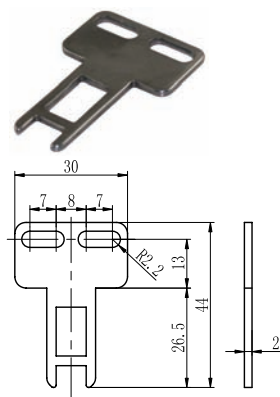


SN-K4

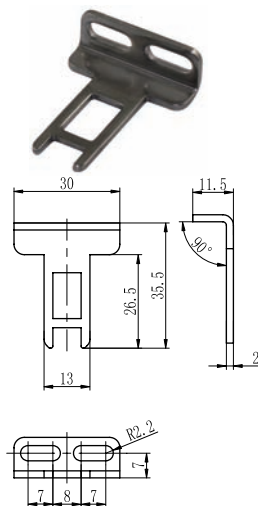


. For use with SN6,SS6191 and SSD6191 (Material: stainless steel)

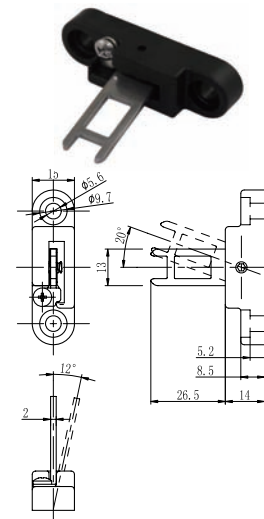
SND-K1



SND-K2



SND-K3



. For use with SND2, SND4, SMN4 and SND6 (Material: stainless steel)