

Medical Grade USB Foot Switches

The USB foot switch is an additional input device that provides a more comfortable and convenient way to work with computers. Users can program a unique key or multiple keys with the provided software to the foot switches.

Features

- Available in Single, Twin & 3-Pedals (If more than 3 pedals needed, two foot switches can be used)
- Pre-program key functions on the foot pedal by software
- Only requires a USB interface
- Compatible with Windows OS 2000/XP/Vista/7
- Available with medical grade waterproof pedals
- Switch functions can be assigned using software provided

Specifications

Operating Frequency	60 ops/min
Insulation Resistance	>100MΩ@500V DC
Contact Resistance	<25mΩ (initial)
Service Life	1 x 10 ⁶ (operations)
Operating Temperature	-30~+80°C (-22~176°F)
Degree of Protection	IP20/NEMA 1 or IPX8/NEMA 4,4X,6,6P

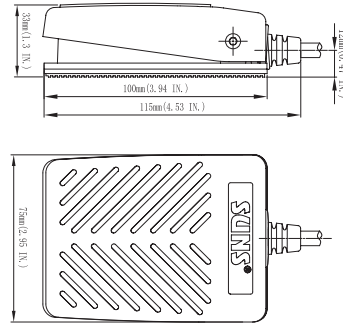
Selection Guide:

FS-81 - SP	-	Twin	-	M	-	USB
Switch Type		Options		Pedal Material		Wiring Information (standard with 3 meters cable)
SP: Snap action (IPx8)		Blank: Single pedal		Blank: Fiber reinforced plastic		
SL: Slow action (IPx8)		Twin: 2-pedal		M: Die cast zinc		
10: Snap action (IP20)		3:3-pedal				

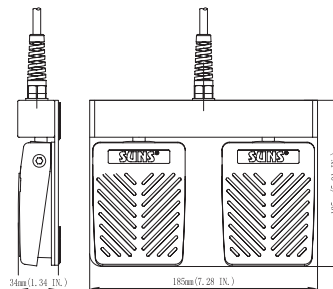
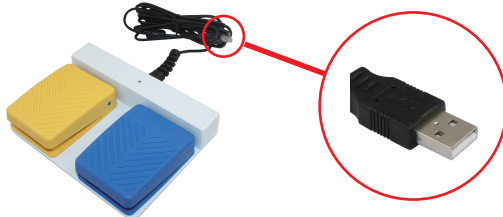
* Although only FS-81 is listed, all Suns medical foot switches are available in USB.

Dimensions:

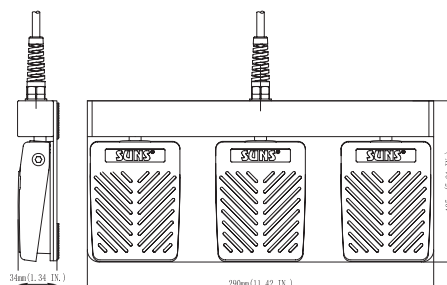
FS-81-10-USB (IP20)
FS-81-SP-USB (IPX8)



FS-81-10-(Twin)-USB (IP20)
FS-81-SP-(Twin)-USB (IPX8)



FS-81-10-(3-Pedal)-USB (IP20)
FS-81-SP-(3-Pedal)-USB (IP68)



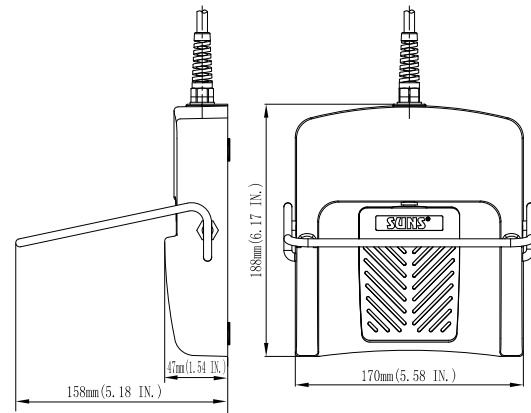
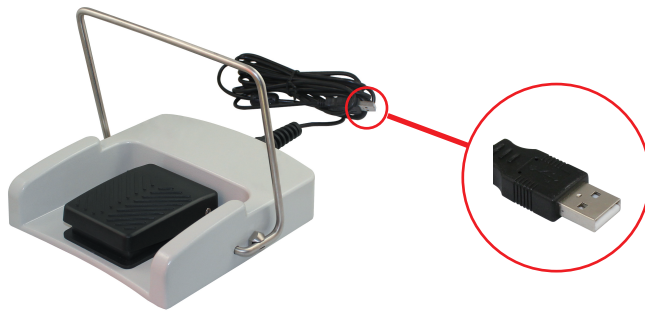
Medical Grade USB Foot Switches

Selection Guide:

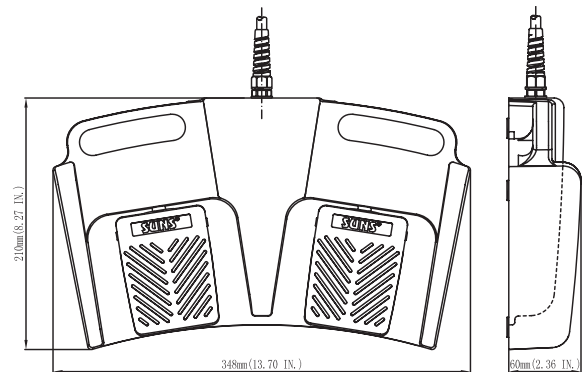
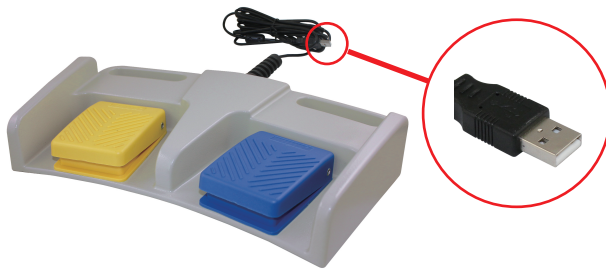
FS-	81	-	SP	-	W	-	M	-	USB
	Options		Switch Type				Pedal Material		Wiring Information (standard with 3 meters cable)
	81: Single pedal		SP:10A Snap action(IPX8)				Blank: Fiber reinforced plastic		
	82: 2-pedal						M: Die cast zinc		
	83: 3-pedal								

Dimensions:

FS-81-SP-W-USB(IPX8)



FS-82-SP-W-USB(IPX8)



FS-83-SP-W-USB(IPX8)

