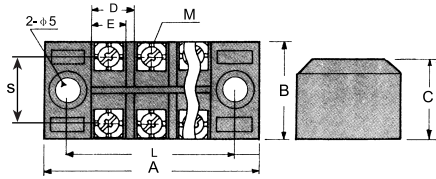


T SERIES TERMINAL BLOCKS

Dimensions



Rated Insulation Voltage U_i 600V

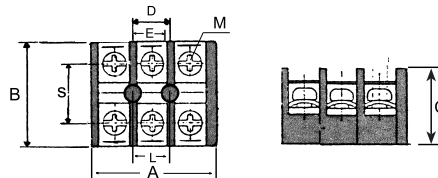


Type	Rated Current (600V)	Number of Poles	Dimensions (mm)								
			A	B	C	D	E	/TH	L	M	S
TB-1503	15	3	45	22	15	8.8	6.6		34.8	3	13.5
TB-1504		4	54						43.8	3	
TB-1506		6	72						61.8	3	
TB-1512		12	127						116.8	3	
TB-2503	25	3	55.6	30	16.7	12	8.5	5/	45.3	4	18
TB-2504		4	67.6						57.3	4	
TB-2506		6	91.6						81.3	4	
TB-2512		12	163.6						153.3	4	

TB



U_i Rated Insulation Voltage U_i 600V

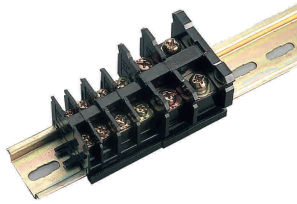


Type	Rated Current (600V)	Number of Poles	Dimensions (mm)								
			A	B	C	D	E	/TH	L	M	S
TC-603	60	3	92	46	35	33.8	21.8	5.8/	30.4	6	26
TC-604		4	112						60.8	6	
TC-1003	100	3	104	55.4	39.1	34.4	22.4	5.8/	34.4	6	28
TC-1004		4	139						68.8	6	
TC-1503	150	3	117	67.6	42.7	38.6	25.6	7/	38.6	8	30.5
TC-1504		4	156						77.2	8	
TC-2003	200	3	134	72.5	46.8	44.4	28.4	8/	44.4	8	34
TC-2004		4	178						88.8	8	
TC-3003	300	3	165	90	53.3	55.3	36.3	7/	54.9	10	48.5
TC-4003	400	4	165	90	53.3	55.3	36.3	7/	109.8	10	

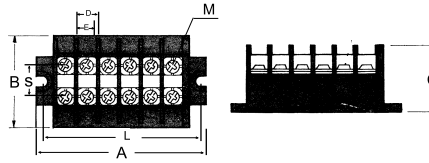
TC

T SERIES TERMINAL BLOCKS

Dimensions



Rated Insulation Voltage U_i 600V



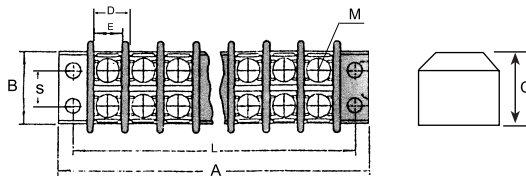
Type	Rated Current (600V)	Number of Poles	Dimensions (mm)								
			A	B	C	D	E	/TH	L	M	S
TK-010	10	Any	16.8+Dxn	38	33	8	7	4.5/35	nx8+9.4	3	16.7
TK-020	20		16.8+Dxn			9.8	8		nx9.8+9.4	3.5	16.2
TK-030	30		16.8+Dxn			11.6	10		nx11.6+9.4	4	18
TK-040	40		16.8+Dxn	13.6	12	nx13.6+9.4	4		18		
TK-060	60		16.8+Dxn	48	42.5	15.5	13		nx15.5+9.4	5	22.9
TK-100	100		16.8+Dxn	53	42.5	19.6	18		nx19.6+9.4	6	26

n Number of Poles

TK



Rated Insulation Voltage U_i 600V

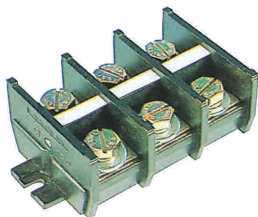


Type	Rated Current (600V)	Number of Poles	Dimensions (mm)								
			A	B	C	D	E	/TH	L	M	S
TU-10	10	**	11.2+Dxn	22.5	10.5	9.6	7.6	4/	nx9.6+7.5	3	7.5
TU-30	30		17+Dxn	34.5	17.5	14.5	11.5	6/	nx14.5+11.5	4	13

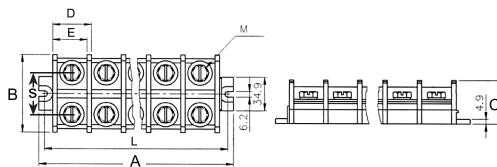
** From 1 To 20(18) Poles

n Number of Poles

TU



Rated Insulation Voltage U_i 600V



Type	Rated Current (600V)	Number of Poles	Dimensions (mm)								
			A	B	C	D	E	/TH	L	M	S
FTB-10	10	Any	16.7+Dxn	28	24.4	8.6	7.1	4/25	nx8.6+10.3	3	
FTB-20	20		17.6+Dxn	31.4	24.4	10.9	8.5	4/25	nx10.9+11.2	4	
FTB-30	30		18+Dxn	36	24.4	13	10.2	4/25	nx13+11.5	4	
FTB-60	60		33.5+Dxn	50	37	20.4	17	6/	nx20.4+18.5	6	
FTB-100	100		34+Dxn	64	41	27	23	6/	nx27+19	8	
FTB-200	200		34.5+Dxn	80	45	35.5	31	6/	nx35.5+19.5	10	

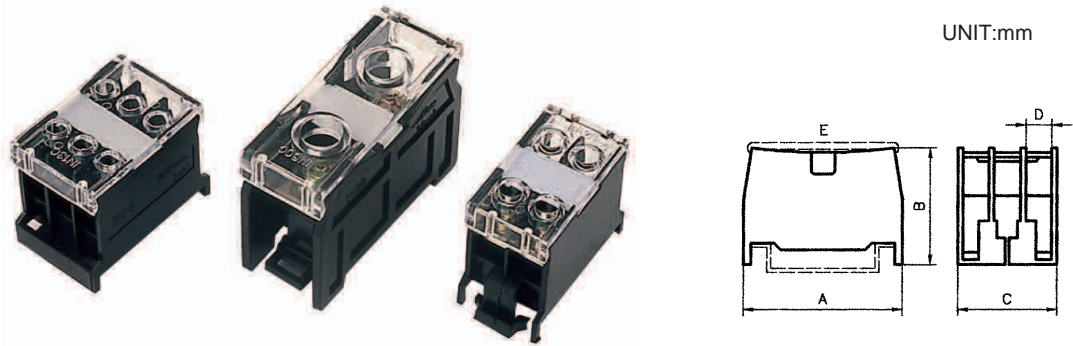
n Number of Poles

FTB



TERMINAL BLOCKS

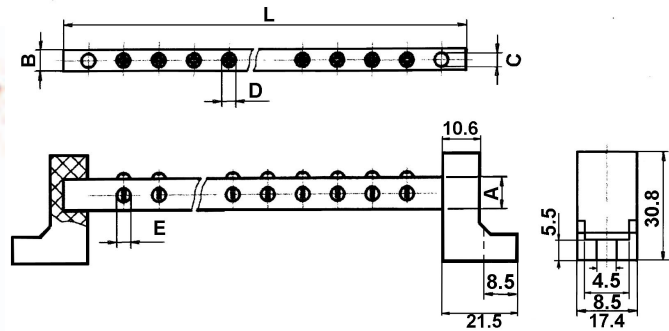
IN Series (Rail Type)



Type	Descriptions*	Dimension (mm)				
		A	B	C	D	E
IN12	2P 2mm ² 20A	40	30	20	8	37
IN13	3P 2mm 20A	40	30	25	6.7	37
IN20	2P 2mm 20A	40	30	30	9.7	37
IN30	2P 2mm 20A	45	34	43	12.2	48
IN411	2P 2mm 20A	45	34	15.5	13.5	48
IN60	2P 2mm 20A	56	38	22	17	56
IN100	2P 2mm 20A	75	45	32	24	73.5
IN200	2P 2mm 20A	86	57	39	31	86.5
IN400	IP 200mm ² 370A	125	73	62	52.3	126

* cross-section area of wire used

Grounding Bus-Bar



Item #	Dimension Unit:mm					
	A	B	C	D	E	L
G-9604	9	6	4	M4	5.2	48.5
G-9606	9	6	4	M4	5.2	63.5
G-9608	9	6	4	M4	5.2	78.5
G-9610	9	6	4	M4	5.2	93.5
G-9612	9	6	4	M4	5.2	108.5
G-12804	12	8	4	M5	6.5	55.5
G-12806	12	8	4	M5	6.5	75.5
G-12808	12	8	4	M5	6.5	95.5
G-12810	12	8	4	M5	6.5	115.5
G-12812	12	8	4	M5	6.5	135.5