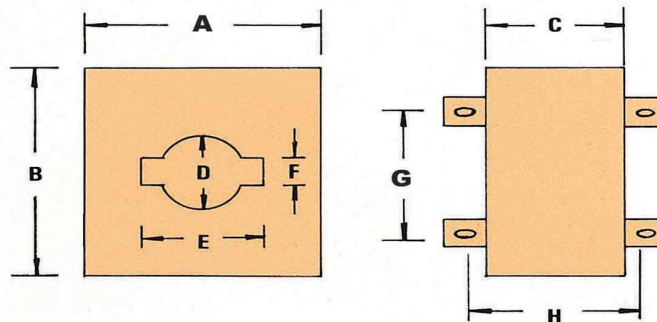


MULTI-MOUNT CURRENT COIL

- This is a special design can use simply to connect with bus bar and cable.
- Special design of Mounting brackets can shrink into its body.
- Maximum Voltage: 600V
- Frequency: 50/60Hz
- Class: 1.0
- Conductor Throught: 1T. (30/5:2T) **JY-100CT**
- Rated Load: 5VA; 10VA;
15VA; 20VA



RATIO	CAPACITY
30/5 ~ 100/5	2.5VA
150/5 ~ 400/5	5VA
500/5 ~ 600/5	10VA
800/5 ~ 2500/5	15VA
3000/5 ~ 4000/5	20VA



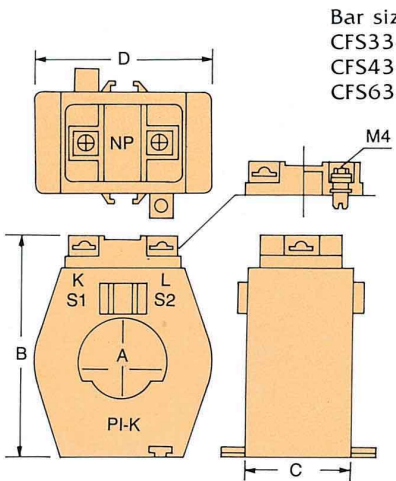
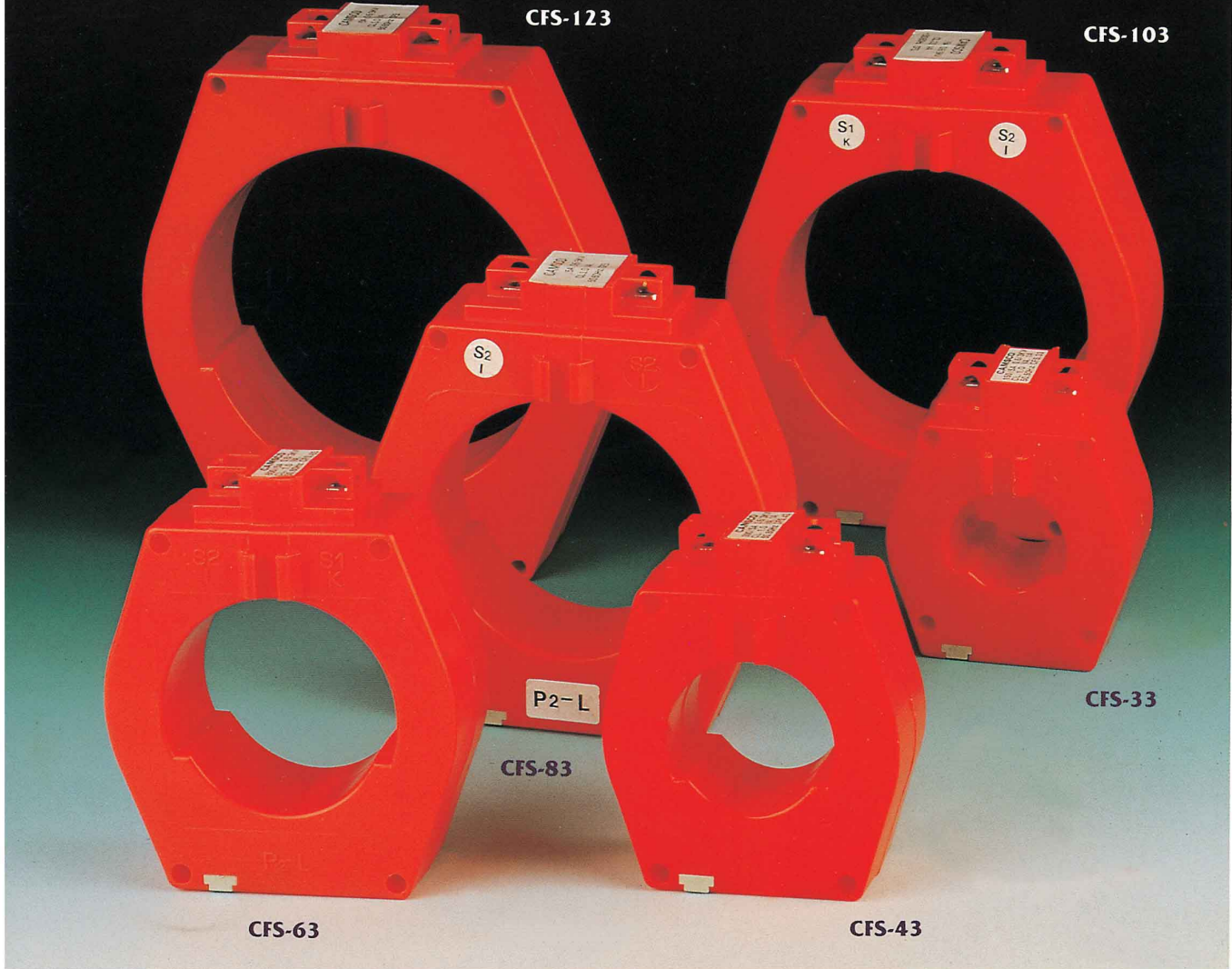
ITEM NO.	RATIO
JY-30CT	30/5 ~ 300/5
JY-40CT	200/5 ~ 600/5
JY-60CT	300/5 ~ 1200/5
JY-100CT	800/5 ~ 3000/5
JY-126CT	2000/5 ~ 4000/5

Dimension ITEM NO.	A (mm)	B (mm)	C (mm)	D (mm)	E (mm)	F (mm)	G (mm)	H (mm)
JY-30CT	78	86	43	22.5	30.5	10	39	56
JY-40CT	78	86	43	30	40	10	39	56
JY-60CT	102	112.5	43	47.5	60	20	56	56
JY-100CT	150	165	45.5	71.5	100.5	20	104	58.6
JY-126CT	190	215	45.5	127	127	58	115	58.6



MULTI-MOUNT CURRENT COIL

- This is a special design can use simply to connect with bus bar and cable.
- Special design of Mounting brackets can shrink into its body.
- Rated Load: 2.5VA, 5VA, 15VA
- Maximum Voltage: 600V
- Frequency: 50/60Hz



Bar sizes
 CFS33-30mm CFS83-80mm
 CFS43-40mm CFS103-100mm
 CFS63-60mm CFS123-120mm

RATIO	CAPACITY
30/5 ~ 100/5	2.5VA
150/5 ~ 400/5	5VA
500/5 ~ 800/5	10VA
2000/5 ~ 4000/5	15VA

FORM OF CURRENT COIL					m.m.	
DIM	CFS33	CFS43	CFS63	CS83	CFS103	CFS123
A	33	43	63	83	103	123
B	96	104	124	147	156	192
C	44	44	44	44	44	44
D	75	82	101	125	141	161

MODEL: CFS-33 **MODEL: CFS-83**
RATIO: 30/5 ~ 200/5 **RATIO: 1000/5 ~ 1500/5**
MODEL: CFS-43 **MODEL: CFS-103**
RATIO: 200/5 ~ 400/5 **RATIO: 2000/5 ~ 3000/5**
MODEL: CFS-63 **MODEL: CFS-123**
RATIO: 500/5 ~ 800/5 **RATIO: 3000/5 ~ 4000/5**

CURRENT TRANSFORMER



CK TYPE

MODEL	CK-29	CK-39	CK-61	CK-85	CK-105	CK-125	CK-150
RATIO	30/5 TO 200/5	300/5 TO 500/5	600/5 TO 800/5	1000/5 TO 1200/5	1500/5 TO 2500/5	3000/5 TO 4000/5	5000/5 TO 6000/5
WINDOW DIMENSION	φ29mm	φ39mm	φ61mm	φ85mm	φ105mm	φ125mm	φ150mm

CURRENT COIL
 RATED LOAD: 2.5VA, 5VA, 15VA, 20VA
 ACCURACY CLASS 1.0
 MAXIMUM VOLTAGE: 600V
 FREQUENCY: 50/60Hz

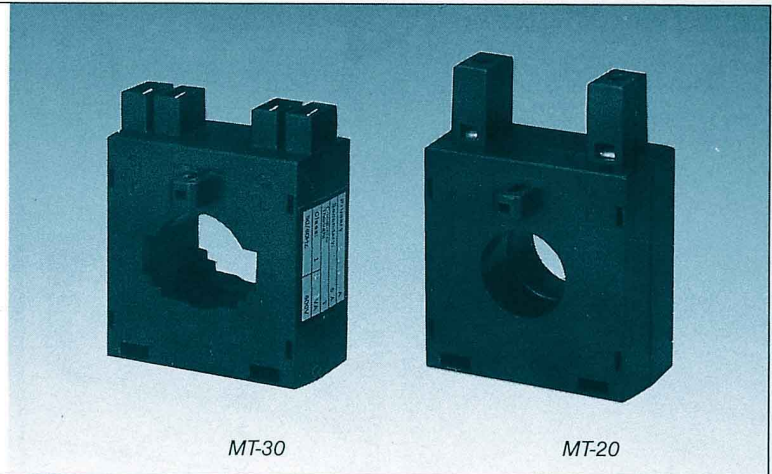


NEW

MINI MULTI MOUNT CURRENT COIL

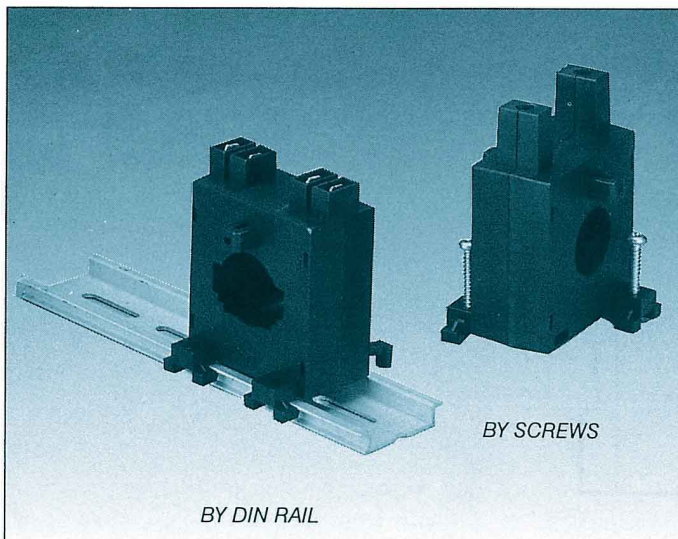
FEATURES

- MODELS MT-30 & MT-20 are available for connecting with CABLE.
- MODEL MT-30 is also available for connecting with BUS BAR.
- Maximum Voltage : 600V
- Frequency : 50/60Hz
- Class : 1.0
- Conductor Through : IT.
- Rated Load : 2.5VA



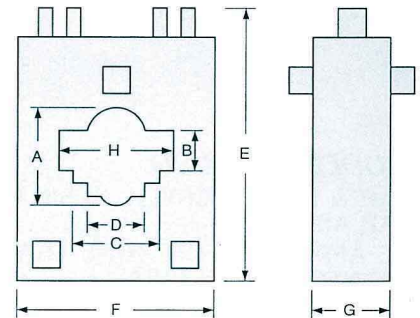
SPECIFICATIONS

- ITEM NO. MT-30
- OUT PUT : PIN - CONNECTOR TAB 6.4mm
- RATIO : 200/5A - 500/5A (IT)
- MOUNTING METHODS : EITHER BY DIN - RAIL (35mm) OR BY SCREWS
- ITEM NO. MT - 20
- OUT PUT : PIN - CONNECTOR
- RATIO : 60/5A - 150/5A (IT) 30/5 (2T)
- MOUNTING METHODS : EITHER BY DIN RAIL (35mm) OR BY SCREWS.

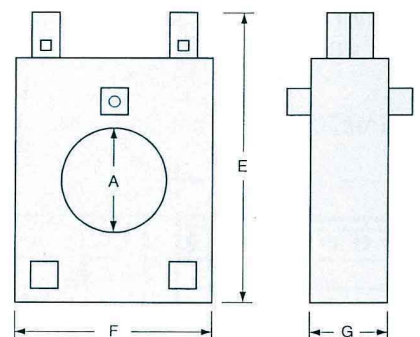


DIMENSIONS

- MT-30



- MT-20



ITEM NO.	mm	A	B	C	D	E	F	G	H
MT - 30		24	10	26	21	66	52.5	27	31
MT - 20		22	X	X	X	75.5	52.5	27	X